

The background of the slide is a watercolor-style illustration of a forest landscape. It features rolling green mountains in the distance, a dense forest of various trees in the foreground and middle ground, and several birds in flight. The color palette is dominated by soft greens and yellows, creating a serene and natural atmosphere.

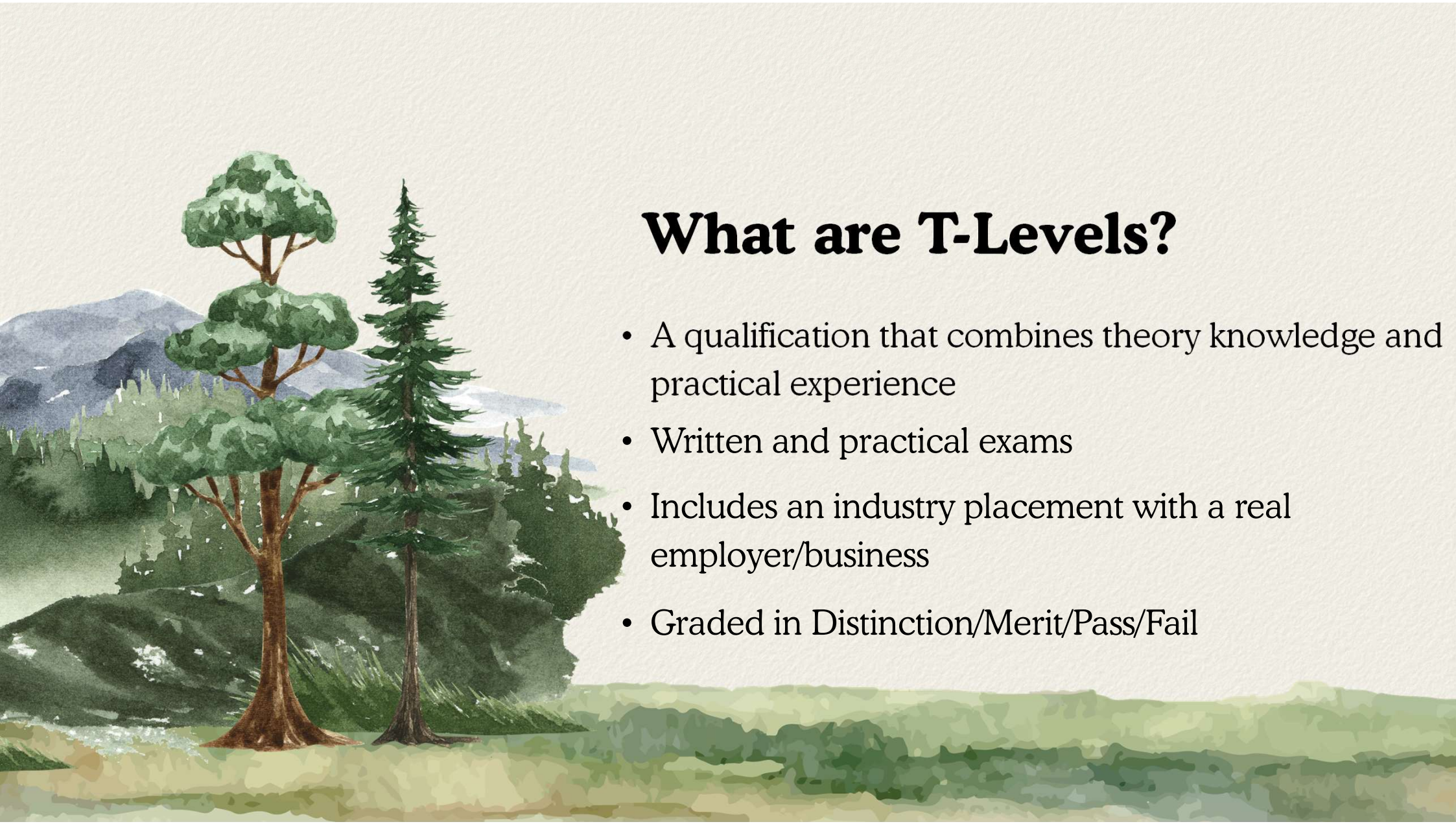
T-Levels

Guest speaker: Katie Finnerty

About Me

- Left Camp Hill in 2025
- Just finished Year 1 of my T-Level
- Studying Animal Care and Management





What are T-Levels?

- A qualification that combines theory knowledge and practical experience
- Written and practical exams
- Includes an industry placement with a real employer/business
- Graded in Distinction/Merit/Pass/Fail

Common Core

Industry-wide knowledge and principles.

Covers topics such as sustainability, finance, ethics and health and safety

Studied in Year 1 across all T Level routes.

Assessment: One written exam and part of the Employer Set Project.

Core Pathway

Theory linked to your chosen T-Level route.

Animal Care examples: health, biology, husbandry and behaviour

Studied in Year 1 across all T Level routes.

Assessment: One written exam and partially through the Employer Set Project.

Occupational Specialism

Practical skills for specific job roles.

Assessment methods vary by industry.

Completed in Year 2 alongside industry placement hours.

Preparations start in Year 1 through practical teaching methods



Work Experience

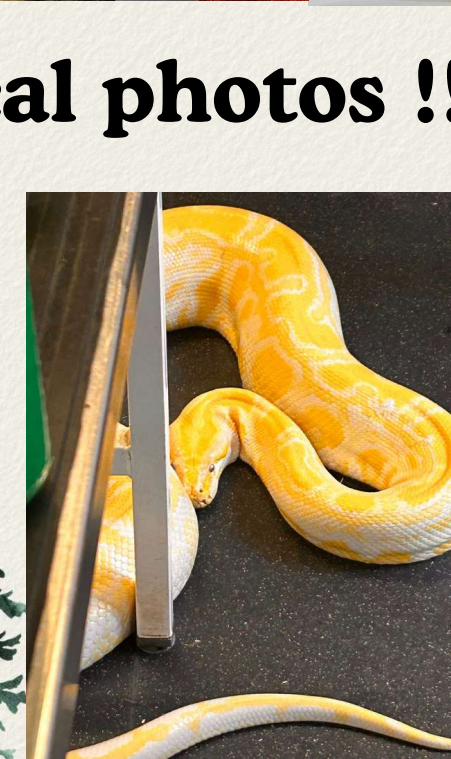
- Workplace experience to improve technical and employability skills
- Readyng students for future careers.
- Developing personality and character.
- Putting theory and guided skills to the test in real-life scenarios



Careers? Future Plans?

- Do what you love
- Do what you are good at
- It's okay to change your mind
- Work with your mind, not against it





Practical photos !!





Work placement photos !!



Thank you
for
listening!

