



DRAMA NEWSLETTER 2

Welcome everyone to the second edition of the KECHG Drama Newsletter. Once again we have a packed issue for you and on the next few pages you will find all kinds of interesting articles including:

- An example of a Set Design completed by one of our Year 11 students this term (including photos of the set in use in performance!),
- The 2 winning entries from last issue's Costume Design Competition - **and details about the competition this time around!**
- A very special Festive Film Review from one of year 12 students, Rutalee,
- Character profiles from year 10 students Anisa and Janani

As a very busy term for the department draws to a close we'd like to say a HUGE WELL DONE and congratulations to all the students who have performed or created design products this term.

A special shout out must go to our Key Stage 4 students who have had a go at their first GCSE style scripted performance in year 10 and have completed their final devised project in year 11. We've seen some stunning work with performances taking us from *Shakers* cocktail bar, to a 1960s mother and baby home, into the disturbing world of Bluebeard and his missing wives and even into purgatory! We've had fabulous acting performances, have seen set designs which have transported us to other worlds and been wowed by beautifully made costumes. The range of talent on show has been phenomenal and we're so lucky to have had the opportunity to see it. As ever we have been mightily impressed by you all and can't wait to see how you rise to the next challenge we throw your way!



YEAR 11 SET DESIGN EXAMPLE

At GCSE you can choose to be assessed in the practical pieces of work as either an Actor, Costume Designer or Set Designer. The vast majority of students choose to work as actors in these performances but so far this year quite a few students have chosen to look at Design instead. These students include Ashwina in 11M who created the Set Design for a devised performance based on the French folktale of Bluebeard and is explained below as an example of some of the really creative work we see from our students regularly.

Bluebeard, the mysterious titular character of the play, takes a new wife and gives her an instruction that she can go anywhere in his chateau except one room - of course as soon as she is alone in the house the wife opens the door to the room with dangerous and shocking consequences! For her design Ashwina focused on emphasising that this tale is like a classic fairytale, gone wrong. The whole stage space was therefore dominated by a huge book which could open and close and was designed and painted to show the castle of Bluebeard and those familiar words 'Once Upon a Time...' (the rest of the story is anything but familiar to us though!)

Combine this huge book overlooking the back of the set, some very eerie lighting and, at a key moment, 1000 red rose petals falling from the ceiling of the drama studio and you end up with a highly effective set design as you can see from the following pictures.

Well done Ashwina for your design and a huge THANK YOU to Mr Ratcliffe for building the frame of the book and to all students who pitched in and helped with the painting.

Well done also to everyone who completed design options this term - we're really looking forward to seeing more examples of your creativity and inventiveness in future!





DRAMA COMPETITION 1

RESULTS

Thank you so much for all the entries to our Costume Design competition in the last issue of the newsletter. We found it really difficult to pick a single winner from all of your fabulous entries and so decided to have a winner from both Key Stage 3 and 4.

Congratulations to **Mary Purugganan in 9X** and **Cara Edwards in 10S** - terrific designs from you both which are shown here for everyone to enjoy!

Mary's entry



Cara's entry



DRAMA COMPETITION 2

For this issue we are having a Script Writing Competition!

If you wish to take part in the competition, please write a scene between 2 characters which would be the opening scene of a play.

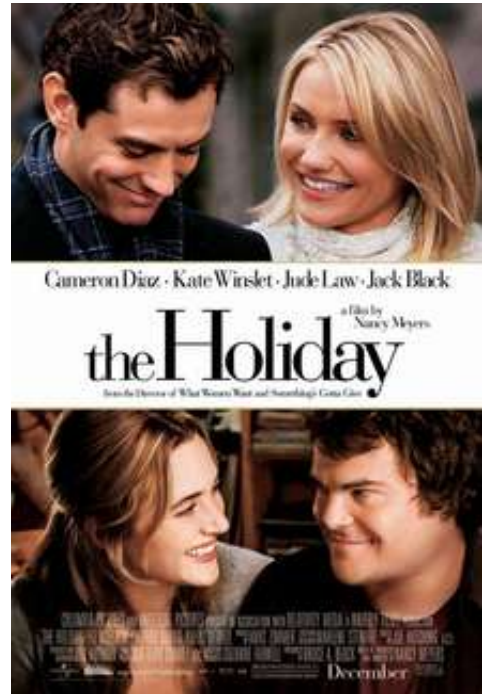
The scene should hint towards a mystery or secret which needs to be hidden and should keep the audience in suspense.

Your script can have both character dialogue and stage directions and should be no longer than one A4 side in length.

Please email your script to p.long@kechg.org.uk by 31st January 2022. The winning script(s) will be displayed in the department and printed in the next issue of the newsletter.

CHRISTMAS FILM REVIEW - "THE HOLIDAY"

The Holiday has all the right ingredients for the classic Christmas movie: comedy, romance and of course a totally predictable ending. It's a movie that I rewatch every December, and still never gets old. It tells the story of two women - the heart-broken, dejected column editor Iris Simpkins (Kate Winslet) and a work-obsessed, far too stressed trailer producer Amanda Woods (Cameron Diaz) - who impulsively decide to swap houses over Christmas after getting tired of their own lives. Amanda is transported to Iris' cramped and secluded cottage in Surrey while Iris visits Amanda's luxurious Hollywood-esque house in LA. From there, they both have their own hallmark Christmas love stories riddled with plot twists and all sorts of mishaps with the ending everyone wants.



As the movie takes place in two different countries, it feels like you're watching two films at the same time with links across the two - I think that this is really good as you don't get bored. Personally, I prefer Iris' story as it is more wholesome. Kate Winslet is usually subjected to roles which are quite serious and even tragic at times (like in *Titanic*), but in *The Holiday* she explores the light-hearted more relatable side to her career - something which I



personally really enjoyed. Much like her character, Jack Black is effortlessly loveable as Miles (Amanda's friend in LA). As usual, he seamlessly ties together the comedic, sweet and vulnerable aspects of his character, acting as the perfect counterpart to Iris. A great addition to the story unfolding in America is Arthur Abbott (Eli Wallach), who is a famous screenwriter during Hollywood's Golden Age who becomes close friends with Iris. This side story was incredibly heartwarming and what

separates this movie from other Christmas films, because the whole movie wasn't just focused on romantic relationships.

Back in Surrey, Amanda's story moves at a faster pace and is more romance-heavy. Even though Diaz's character was bordering on annoying, she was really just a realistic character that you can sometimes see yourself in. I found that her character resembles Rachel from

FRIENDS, in the way that she could very easily be dislikable, but manages to gain the affection of people around her as she is a good person. Similarly, Diaz was good at showing the overall kindness in Amanda regardless of her flaws. Amanda and Graham (Iris' older brother played by Jude Law) go on a sweet journey filled with the typical rom com tropes which makes it all the more enjoyable and keeps you interested throughout the movie. I thought that both the actors were very convincing as they both managed to make some really corny lines watchable if not cute.

While there are criticisms about how the movie is not realistic, it is still one of my favourites, because I don't think the point of a Christmas film is to be believable (which mum forgets her child at home on a holiday and doesn't realise until they're on the plane?). Instead, I think that a Christmas movie should be relaxing and enjoyable - *The Holiday* definitely fits this criteria. Overall, I would recommend this movie, not just for the plot or the Christmas vibes, but also because of the subtle messages it gives you through the two different stories. With Amanda's story, it tells you to give yourself a break and that you don't always need to be practical, and with Iris' teaches you to put yourself first and to surround yourself with people who are good for you.



By Rutalee Buch 12S

YEAR 10 CHARACTER PROFILE

NICKY FROM SHAKERS

By Anisa Bashir 10W



Shakers -

This play is set in the year 1985. We see what life is like for 4 poor, unfortunate waitresses. Their job, working in a bar, doesn't seem the most enjoyable of jobs, rather a demanding and tiring one. They work late into the night, and one of the characters, Adele, even has a toddler. Because there are 4 main characters, we get to see the situation from 4 different perspectives and how they are under pressure in different ways.

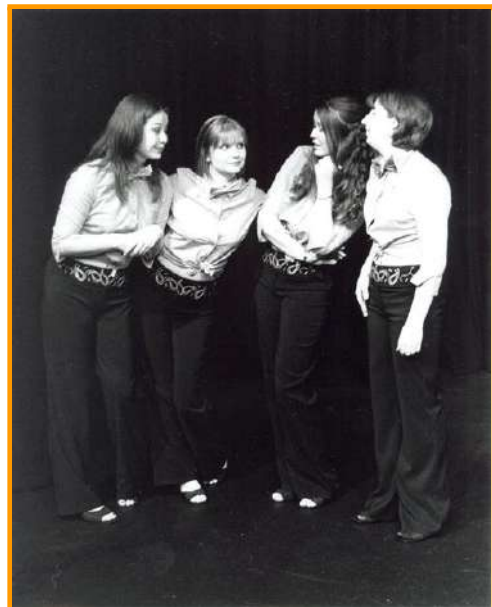
Nicky's Backstory:

Nicky's longs to be a star, but she is employed in this job - being a waitress. She's the moral support of the 4 waitresses. She helps the other characters

deal with their issues rather than trying to fix her own. There's a particularly strong relationship between Adele, who is a single mother, and Nicky. Their humorous relationship is the highlight of the play in my opinion, and shows us that even though each of the characters had their own issues, they still stuck together through it all.

Character Qualities:

- Determined
- Resilient
- Amusing
- Caring
- Compassionate



YEAR 10 CHARACTER PROFILE

DOLORES FROM BE MY BABY

By Janani Anand 10C

Be My Baby - Is a play written in 1998 by British playwright Amanda Whittington. It is set in St Saviour's Mother And Baby Home, North Of England, 1964. The protagonist is Mary who is a young unmarried pregnant woman who is sent to a mother and baby home by her mother (Mrs Adams) so she can give birth to the baby in secret. During these times it was quite a taboo to have a baby unmarried hence there were lots of homes set up like this so families would send their daughters there to save their reputation.

Plot

The play is Mary's journey from going to St Saviour's Mother And Baby Home, delivering the baby (Lucy) and then unfortunately having to give it away. Meanwhile she builds lots of valuable friendships through their liking of love songs as well as witnessing other girls' reactions of having to go through the same process.



Character Overview

Dolores is a supporting character who is seventeen years old and is three months pregnant and eager to go back to her lover. She has recently been put in St Saviour's Mother And Baby Home and we don't know much about her background or where she's from except that she loves Alfie who she has been with for a long time and was nearly going to get married to. Unfortunately the child Doll is carrying isn't Alfie's as we discover in a

very upsetting moment in the play.

She is very important in the story line as she brings much relief as she's very comical. This is very necessary as this play challenges and discusses sensitive topics such as having being pregnant while unmarried and being a single parent.

Through Dolores we learn about the struggles a young, unmarried, pregnant woman faced such as being uneducated and hidden from society. She is completely unaware of how child birth works which puts both herself and the unborn child at risk. She is also hidden away from the rest of society to give birth in secret. As it was seen as unreputable and her family were more worried about how others would view them rather than being there for when she needed help the most.



Character Qualities

- Naive
- Romantic
- Loving and lovable
- Not that intelligent
- Girly